



A Charming Chest



- [Trunks & Chests](#)
- [Trunk History](#)
- [Trunk Restoration](#)
- [Keepsake Certificates](#)
- [Marvelous Mirrors](#)
- [Lovely Labels](#)



Trunk History

Trunks, Luggage, Traveling Bags, & Satchels

The variety of packing trunks and carrying bags for salesmen, tradesmen, bankers, doctors, and travelers that are shown here will astound you. Whether of light or heavy weight, large or small size, and specific or general purpose, they all were made with a job in mind. Taken from the pages of sales catalogs of the 1890s, these illustrations are advertising pieces to the new mail-order business. They evoke the time when objects were made to last forever, and today there are trunks and bags of these types available in the antiques market. The Price Guide reflects what their values are today.

Price: \$20.00

[Add to Cart](#)

Currently, and in the past, trunk makers have uniquely designed several shapes and sizes of trunks. Various wood such as Cedar, Oak, and Pine were used to construct trunks. Many trunk makers from the 1600's covered trunks with hides such as deer, horse or cowhide. Brass ornaments such as tacks, nails, and locks were used in the 1700's to decorate the trunks as well as to differentiate the uniqueness of the trunk maker. Several hours and days were spent designing and constructing trunks. Trunks were made for the circus, travelers, salesmen, storage, and many other purposes.

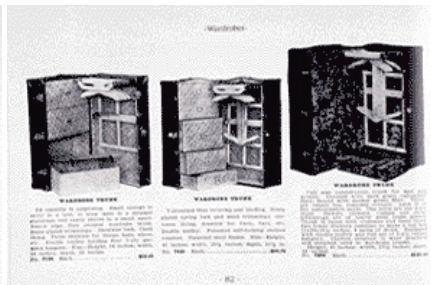
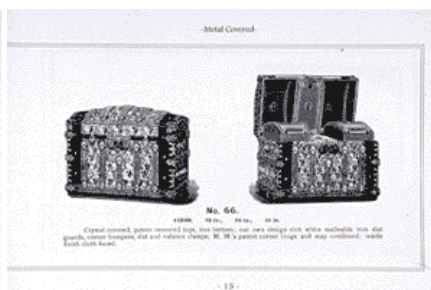
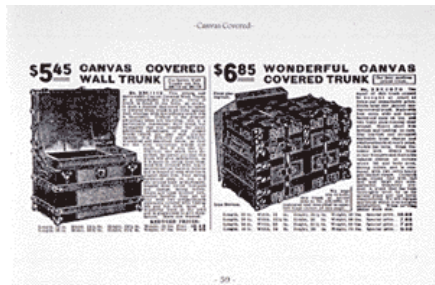
- [Relaxing Tea](#)
- [Fine Collectibles](#)
- [Heavenly Health](#)
- [Fabulous Links](#)
- [Specials](#)
- [Contact Us](#)

Gourmet Bagless Tea



Fresh Brewed Tea!
Quick, clean, easy.
[| more info |](#)

October 15, 2007
11:23 pm



Trunk Labels



Lovely Antique Trunk
Replica Labels.
[| more info |](#)

Below is a timeline of a variety of trunks dating from 1770-1930.



Hide covered or Stagecoach trunk. Hand wrought iron handles and lock. Often has hair on the hide. Many have brass tack decoration and Initials. Ca. 1770 -1840

Leather covered Civil War Era trunk. Usually with leather covering. Often has compartments in the lid. Ca. 1850 - 1865

Jenny Lind style trunk. Distinctive keyhole shape when viewed from the ends. Named after the entertainer of the era. Generally leather covered. Rolled steel reinforcing straps about 1" wide. Sometime has large brass buttons. Ca. 1845 - 1870

Curved top trunk. Leather, paper, or canvas covering. Some have fancy brass lockplates. Thin hardwood reinforcing slats. Ca. 1850 -1870

[\[Replica Antique Trunks\]](#) [\[Steamer Trunks\]](#) [\[More Steamer Trunks\]](#) [\[Toy Chests\]](#) [\[Children's Furniture\]](#) [\[Circus Theme Furniture\]](#) [\[Safari Theme Furniture\]](#) [\[Noah's Ark Theme\]](#) [\[Choo Choo Train Theme\]](#) [\[Pirates Chests\]](#) [\[Book Displays\]](#) [\[Trunks For Students\]](#) [\[Equestrian Trunks\]](#) [\[Amish Trunks\]](#) [\[Pirates Chests\]](#) [\[Trunk History\]](#) [\[Trunk Accessories\]](#) [\[Trunk Restoration\]](#) [\[Lovely Labels\]](#) [\[Specials\]](#) [\[Relaxing Tea\]](#) [\[Fine Collectibles\]](#) [\[Victorian Purse Mirrors\]](#) [\[Lovely Purse Mirrors\]](#) [\[Fine Fashion\]](#) [\[Heavenly Health\]](#) [\[Specials\]](#) [\[Fabulous Links\]](#) [\[Contact Us\]](#)

