

[Home](#)[What's New?](#)[Sale](#)[Patterns](#)[Fabrics](#)[Corset Patterns
and Parts](#)[Dolls and
Doll Clothes](#)[Books](#)[Ordering](#)[Travel](#)[E-mail](#)[Gallery](#)[The Cottage](#)[Policies](#)

Sewing Central

Regency Patterns: 1800-1815

Click on each thumbnail to take you to each pattern.

[Add These to my
Shopping Cart](#)[See My Cart](#)[Check out](#)[Georgian/American
Revolution:1710-1800](#)[Regency:1800-
1815](#)[Native
American
Clothing](#)[Pre-Hoop:
1815-1850](#)

[Women's and Girls' Patterns](#)
[Men's and Boys' Patterns](#)



[Eagle's View PM61](#)

Early Drop Sleeve Shirt This cloth shirt was standard apparel in the late 18th and early 19th centuries. Made of calico, muslin, linen, or wool, the style endured long after fashion dictated change. Roomy and comfortable for work or play, the practicality of the design is apparent.

The Early Drop Sleeve Shirt is styled without a yoke. There is a short stand-up collar variation included with the pattern along with your choice of tucks or gathers for fullness. It may be decorated with ribbons to make an unusually striking shirt for powwows

and dances.

Included is a complete glossary of terms so that anyone from the novice to the experienced seamstress will be comfortable using the pattern and this fine shirt may be made in sizes Small (36) through XX-Large (50). **\$8.00**

Quantity to Order:

[Eagle's View PM62](#)

Early

Frontiersman's

Shirt. This leather shirt depicts the style worn in the early 19th century by fur trappers and Indians alike. The shirt is slightly tailored but has the freedom of no sleeve cuffs or button closings.



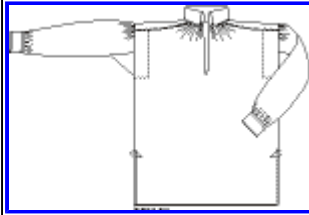
The Early Frontiersman's Shirt has a false yoke when front and back fringe is added. Other options are sleeve fringe and a collar.

Included is a section on "Working with Leather" and a complete glossary of terms used. May be made in sized Small (36) through XX-Large (50). **\$8.00**

Quantity to Order:

[Kannik's Korner KK](#)

**4102 Man's Shirt --
First Quarter of the
19th Century** English
Style



A full size shirt pattern, based on original 1808 cutting directions, with construction techniques from various original shirts. Directions for bosom ruffles included.

Includes sizes XS-S-M-L-XL-2X-3X.

\$12.00 US each
Quantity to Order:

Eagle's View PM73
Broadfall Drop
Front Breeches and
Pants. Breeches were worn by both military and civilians in the 1700's and early 1800s. Usually made of broadcloth or linen, they were also worn in leather and were buttoned or buckled just below the knees or tied with a drawstring. In the fur trade the legs were extended but pants kept the drop front, the full gathered seat and the gussets in the back of the waistband.



Variations are given in the pattern for knee closing and leg length and it comes in waist sizes 30 through 42.

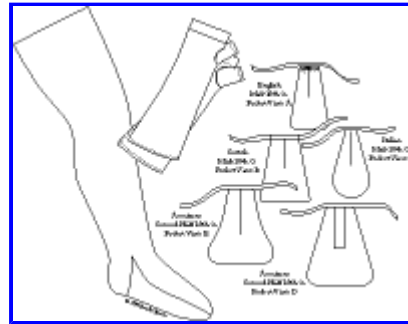
The pattern is easy to use and comes complete with a glossary of terms and a section on "Working

with Leather" so that almost anyone will be comfortable using this pattern. **\$8.00**

Quantity to Order:

**[Kannik's Korner
KK-6001 Accessory
Patterns - 17th, 18th
and early 19th
century Stockings,
Pockets & Mitts](#)**

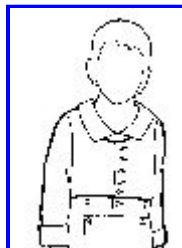
A full scale, multi-size, pattern for constructed stockings for *men or women*, with instructions for custom fitting. Can be made of knitted cloth, or of linen cut on the bias (good for 17th, 18th, early 19th century). Five pocket styles, including three mid-18th century (English, Scotch, & Italian), and two second half 18th century from America. Also includes a pattern for women's common linen mitts, cut on the bias (one size).



Includes stocking sizes S-M-L-XL-2X-3X

\$10.00 US each

Quantity to Order:



**[Rocking Horse Farm
108: The Little Man](#)**

This outfit for younger boys (ages about 4-10) consists of a jacket, waistcoat,

and trousers. Sizes 5-8. For older and larger boys, see [RH109: The Apprentice](#).

Price: \$13.00

Quantity to Order:

[Rocking Horse Farm
109: The Apprentice](#)



This outfit for a boy over the age of about 10 consists of a jacket, waistcoat, and trousers, all in one package. It greatly resembles the clothing that the boy's father or master would wear. Sizes 8-16. For younger and smaller boys, see [RH108: The Little Man](#).

Price: \$13.00

Quantity to Order:

[Rocking Horse Farm
RH150: 18th Century
Waistcoats.](#)

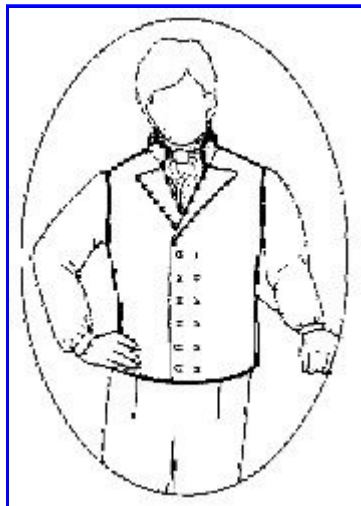


This pattern has two styles: a French and Indian War style and a Revolutionary War style. The latter is also appropriate to the Bicentennial period (early 1800's), especially on men who are old enough to remember the 1780's (say 30 or older). Sized from a 38" chest to a 48" chest.

Price: \$10.50

Quantity to Order:

[Rocking Horse Farm
RH153: Gentlemen's](#)



Waistcoat.

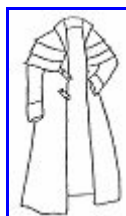
This is a double-breasted waistcoat as seen in so many costume dramas of this period.

Sized as follows:

- M-L (38" - 44" chest)
- XL-K (46" - 52" chest).

Price: \$10.50
Quantity to Order,
M-L (38" - 44"
chest):

Quantity to Order,
XL-K (46" - 52"
chest):



Rocking Horse Farm 200: Coachman's Coat.

This coat, which can be made with from one to three capes, has double-button closures and a split tail for riding.

Sized as follows:

- S-M-L (34" - 44" chest)
- XL-K (46" - 52" chest).

Price: \$19.00
Quantity to Order,
S-M-L (34" - 44"
chest):

Quantity to Order,
XL-K (46" - 52"
chest):

Rocking Horse Farm

[201: 1795-1820
Tailcoat.](#)

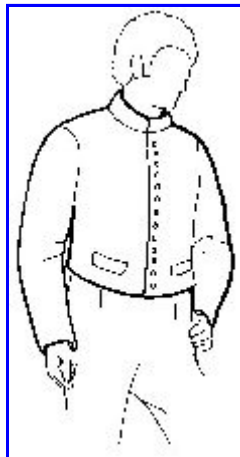
This pattern for a formal tailcoat includes notations of the important style changes in this period: just as it would cause comment to appear at a party today with 4" 1970's lapels, it is important to have the clothes cut correctly for the period. Sized as follows:



- M-L 38" - 44" chest
- XL-K 46" - 52" chest - currently unavailable while it is revised by the publisher -- we expect to have it available once again in 2005.

This pattern is currently unavailable while it is revised by the publisher -- we expect to have it available once again in 2005.

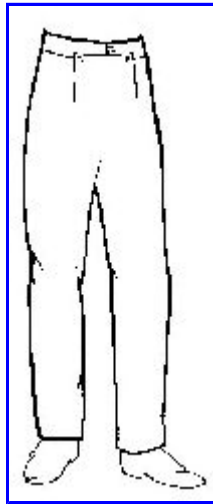
[Rocking Horse Farm
RH205: Workman's
Jacket or Stable
Jacket.](#)



This single-breasted jacket pattern can be made into a workmans jacket or a stable jacket for the early 1800's, either with or without a collar. Sized from a 34" chest to a 48" chest.

Price: \$13.00

Quantity to Order:



[Rocking Horse Farms
207: Narrow Fall
Pants](#)

These early 19th century style of drop front pants were common from the late 1790's until about 1840. Sized from waist sizes 30-40.

Price: \$10.50

Quantity to Order:



[Rocking Horse Farm
RH707: Blanket Shirt.](#)

This shirt, made from heavy wool or even blanket fabric, is wonderful for those chilly days, especially when a man has to work outdoors, rather than simply stand and look nice in multiple constricting layers.

Sized as follows:

- S-M 34'' - 40'' chest
- M-L 38'' - 44'' chest
- XL-K 46'' - 52'' chest

Price: \$10.50

Quantity to Order, S-M (34'' - 40'' chest):

Quantity to Order, M-L (38'' - 44'' chest):

Quantity to Order, XL-K (46'' - 52'' chest):

[La Mode Bagatelle
001: Regency
Wardrobe.](#)



La Mode Bagatelle's Regency Wardrobe Pattern will help you to be properly dressed for your next Regency event. With the use of different fabrics and trims, you will be dressed to breakfast with Eliza Bennet, have tea with Emma Woodhouse and meet Captain Wentworth in the candlelit assembly rooms. These Patterns require only basic sewing ability, but may be embellished to your heart's desire. As Jane Austen said, you may "ruin yourself in black satin ribbon with a proper perle edge." Iron on "embroidery look" transfers are included, as well as suggestions for using the pattern pieces in alternate ways to create almost any Regency garment.

Each La Mode Bagatelle pattern contains ladies sizes 6 through 22 (also included are special bodice pieces for DD cup in sizes 18 through 22) as follows,

- Bodiced Petticoat: To give the proper Regency silhouette.
- Dress: 8 Interchangeable dress pieces: 2 skirt, 4 sleeve and 2 bodice options
- Chemisette

- False Sleeves
- Spencer: With 2 collar variations.
- Fetching Beret
- Muff
- Reticule
- Instructions for a Shawl

Price: \$57.00

Quantity to Order:

[Sense & Sensibility 01: Regency Gown.](#)

This is a Regency gown pattern, designed after the styles of the early 1800s and particularly appropriate for 1812 impressions and 1804/Lewis & Clark interpreters. The pattern is sized from 8-18 and includes options for long sleeves, undersleeves and two different skirt types.



For sizing on this pattern, please click [HERE](#)

Price: \$15.00

Quantity to Order:

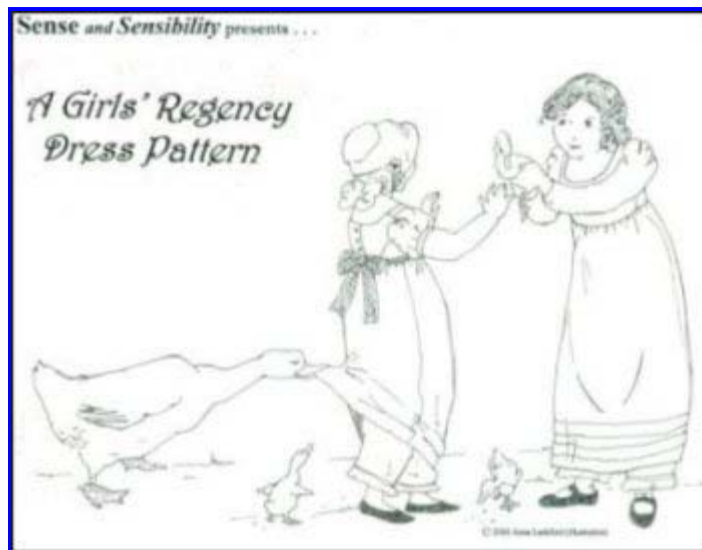
[Sense & Sensibility 01C: Girl's Regency Dress](#)

This is the designer's new Girls' Regency Dress pattern--a companion to her [Sense & Sensibility 01: Regency Gown](#))

Customers have asked for years if she ever planned to introduce girls' patterns, and

here it is.

- Sizes 1, 2, 3, 4, 6, 8 & 10 all included in one envelope.
- Illustrated instructions make construction easy!
- Options for long sleeves, short sleeves, and undersleeves.
- For sizing on this pattern, please click [HERE](#)
- The bodice is straight (not gathered) across the front, and the skirt gathers all the way around (though you can create it with gathers across the back only if you prefer). The bodice back has the period correct dropped shoulder seams and curved side back seams. A wide ribbon around the waist gives the dress a darling "Kate Greenaway" look. The pattern is rated "intermediate" because of the lining and understitching, but it is actually easier to put together than the women's pattern.

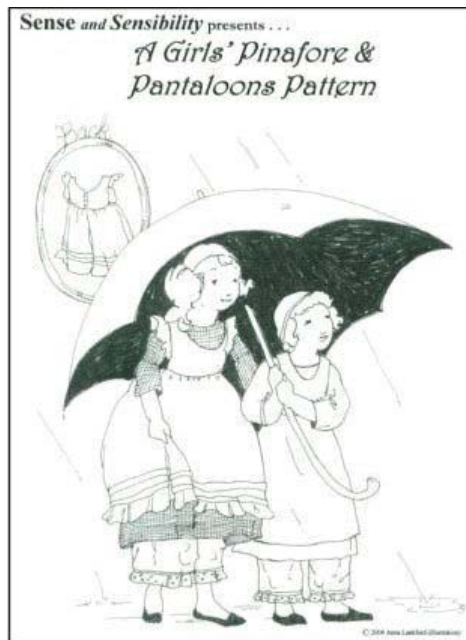


Price: \$12.00
Quantity to
Order:

[Sense & Sensibility
08c: Girls' Pinafore
and Pantaloons.](#)

This is the new Girls' Pinafore pattern with bonus Pantaloon pattern on the same sheet! The designer created this pattern to work within several different eras and be versatile enough for both play and dress-up!

- Sizes 1, 2, 3, 4, 6, 8 & 10 all included in one envelope.
- Illustrated instructions make construction easy!
- Options for plain and fancy pinafores.
- Bonus pattern included for long pantaloons!
- For sizing on this pattern, please click [HERE](#)



This pinafore will work over the [Sense & Sensibility 01C: Girl's Regency Dress](#), but it is also appropriate for the Romantic Era and the late Victorian-early Edwardian eras. The plain pinafore is rated "easy," because a beginner could put it together with no trouble. The heirloom

pinafore requires some more advanced sewing techniques (French seams, tucks, etc.), but it is still more "intermediate" than "advanced."

Price: \$12.00

Quantity to Order:

[Sense & Sensibility 02: Spencer Jacket.](#)

This is based on a Spencer jacket in the D.A.R. Museum collection and one at the Valentine. The designer also drew from Janet Arnold's *Patterns of Fashion*. In addition to the different jacket types, you can create a long coat or vest-style pelisse with a skirt.

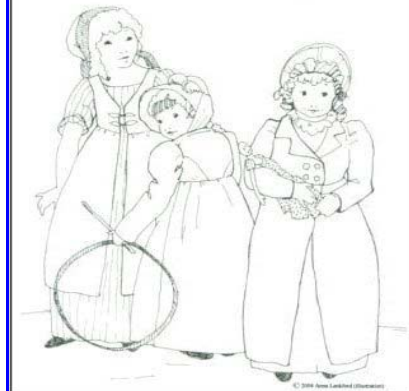
For sizing on this pattern, please click [HERE](#)

Price: \$12.00

Quantity to Order:



Sense and Sensibility presents ...
*A Girls' Regency Spencer
 & Pelisse Pattern*



Here is the new [Girls' Spencer Jacket/Pelisse pattern](#)--a companion to the [SS02 women's pattern](#).

- Sizes 1, 2, 3, 4, 6, 8 & 10 all included in one envelope.
- Illustrated instructions make construction easy!
- Options for double-breasted and non-

overlapping front closure; notched collar or no collar; full jacket/coat or sleeveless, vest-style pelisse.

Price: \$12.00

Quantity to Order:

Mantua Maker 1810-1: 1805-1812

Regency Frock has four rows of drawstrings at the neckline. It has options for short or long sleeves, and several options for sleeve styles. It can be made in day or dance hem lengths. The pattern includes many decoration ideas and variations.

Price: \$16.00

Quantity to Order:



Mantua Maker 1810-2: 1800-1820 Open Robe

, also known as the tunic dress or vest, is a transparent over garment worn as a fashionable accessory for evening or walking wear.

Price: \$10.00

Quantity to Order:



Kannik's Korner KK 6103 Woman's Shift

1790-1820



A full size shift pattern, useful for Empire and Federal style gowns, with a drawstring neckline to help adjust shift to gown neckline, and short sleeves to go with the fashion of the period. Based on original cutting directions, with construction techniques from several extant garments.

Includes sizes XS-S-M-L-XL-2X-3X.

\$12.00

Quantity to Order:



[Rocking Horse Farm 103: The Big Girl](#)

This dress for girls sizes 5-14 (up through a 32-26-35 figure) is styled just like the [adult dress RH186](#), making it also ideal for ladies of slighter figure.

Price: \$10.50

Quantity to Order:



[Rocking Horse Farm 104: High-Waisted Dress](#)

Girls' dresses in this period were much like the adult styles, except that the bodice had little to no fullness. Dress buttons at the back. Sized 4-14 (23" bust and 41" height to 32-26-35).

Price: \$13.00
Quantity to Order:

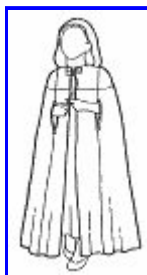
[Rocking Horse Farm 105: Dress with Pantalets.](#)



High-waisted bodice and a shorter skirt, worn over pantalets. Sized 4-14 (23" bust and 41" height to 32-26-35).

Price: \$13.00
Quantity to Order:

[Rocking Horse Farm 106: Child's Cape.](#)



This is a simple lined cape, entirely suitable for either sex in this period and for a large span on either side. Sized 4-14 (23" bust and 41" height to 32-26-35).

Price: \$13.00
Quantity to Order:

[Rocking Horse Farm 182: Shortgown, Petticoat, and Chemise.](#)



The basic work garments of the late 1700's and early 1800's. This includes a true pattern for the shortgown and diagrams for the petticoat, apron, neckcloth, and chemise.

Sized as follows:

- S-M-L (from a

- 30-23-32 figure to a 40-32-42)
- L-XL-Q (from a 40-32-42 to a 48-42-50).

Price: \$13.00

Quantity to Order, S-M-L (from a 30-23-32 figure to a 40-32-42):

Quantity to Order, L-XL-Q (from a 40-32-42 to a 48-42-50):



[Rocking Horse Farm 186: Chemise Dress.](#)

This gown, worn generally between 1790 and 1808, was patterned after those worn by Marie Antoinette and her court. Sized from a 30-23-32 figure to a 48-42-50. [Pattern RH103](#) is the child's (or slight woman's) version of this dress.

Price: \$13.00

Quantity to Order:



[Rocking Horse Farm 188: Gown with Overdress.](#)

This style was popular throughout the early 19th century because of the widespread use of light muslin fabrics in both summer and winter. Sized as follows:

- S-M (from a 30-23-32 figure to 36-28-38)
- L-XL (from 38-

- 30-42 to 44-37-46)
- Queen (46-39-48 to 48-42-50).

Price: \$15.50

Quantity to Order, Size S-M (from a 30-23-32 figure to 36-28-38):

Quantity to Order, Size L-XL (from 38-30-42 to 44-37-46):

Quantity to Order, Size Queen (46-39-48 to 48-42-50):

[Rocking Horse Farm 191: Bib Front Gown.](#)

This very comfortable dress was high fashion in the very early 1800's. It later evolved into a work dress, and lasted well into the 1820's. Sized:

- S-M-L (from a 30-23-32 figure to a 40-32-42)
- XL-Q (from 42-32-44 to 48-42-50).

Price: \$13.00

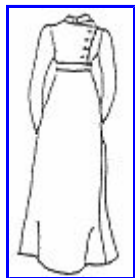
Quantity to Order, S-M-L (from a 30-23-32 figure to a 40-32-42):

Quantity to Order, XL-Q (from 42-32-44 to 48-42-50):



[Rocking Horse Farm 194: Riding Habit.](#)

The riding habit/traveling clothes of the early 19th century followed



masculine styles. This two-piece habit (jacket and jumper) can be trimmed in a variety of fashions. Blouse pattern included. Sized S-M-L (from a 30-23-32 figure to a 40-32-42) and XL-Q (from 42-32-44 to 48-42-50).

Price: \$14.00

Quantity to Order, S-M-L (from a 30-23-32 figure to a 40-32-42):

Quantity to Order, XL-Q (from 42-32-44 to 48-42-50):



[Rocking Horse Farm 196: Redingcote/Riding Coat.](#)

High-waisted caped coat with a stand-up collar. Simple, warm, and pretty. Sized S-M-L (from a 30-23-32 figure to a 40-32-42) and XI-Q (from 42-32-44 to 48-42-50).

Price: \$15.00

Quantity to Order, SML (from a 30-23-32 figure to a 40-32-42):

Quantity to Order, XL-Q (from 42-32-44 to 48-42-50):



[Rocking Horse Farm 197: Early 19th Century Accessories.](#)

Patterns and/or instructions for a chemisette, reticule

(purse), bonnet, turban, and a high-waisted apron.

Sized from a 30-23-32 figure to 48-42-50.

Price: \$13.00

Quantity to Order:

[Georgian/American Revolution:1710-1800](#)

[Regency:1800-1815](#)

[Native American Clothing](#)

[Pre-Hoop:1815-1850](#)

Add These to my Shopping Cart

See My Cart

Check out

[To place an order...](#)
